

# Post-16 LPUK Datadashboard

## The Emmbrook School 2016 - Headline Measures Report

Type of school or college:	Number of students with an A level exam entry:	Progress score:	Attainment grade	Point score	Achieving AAB or higher in at least 2 facilitating subjects:	Grade and points for a student's best 3 A levels:
Maintained School	115	0.05 Average (-0.08 to 0.17)	C	30.00	12.4% (89 students)	C+ - 33.03 (89 students)

## Attainment

This section is based on data for students at the end of KS5 in summer 2016.

<b>The Emmbrook School 2016</b>	
<b>% of A Level examinations awarded A*-E grades</b>	99.6%
<b>% of A Level examinations awarded A*-C grades</b>	77.0%
<b>% of A Level examinations awarded A*-B grades</b>	44.8%
<b>% of A Level examinations awarded A*-A grades</b>	18.6%
<b>AAB (or higher) in 3+ facilitating subjects (A Level students)</b>	9.5%
<b>AAB (or higher) in 2+ facilitating subjects (A Level students)</b>	11.6%
<b>3+ A Levels at A*-E</b>	86.3%
<b>2+ A Levels at A*-E</b>	95.8%
<b>1+ A Levels at A*-E</b>	100.0%

---

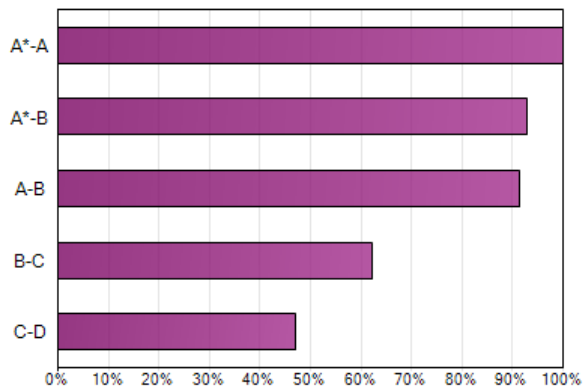
**The Emmbrook School 2016**

---

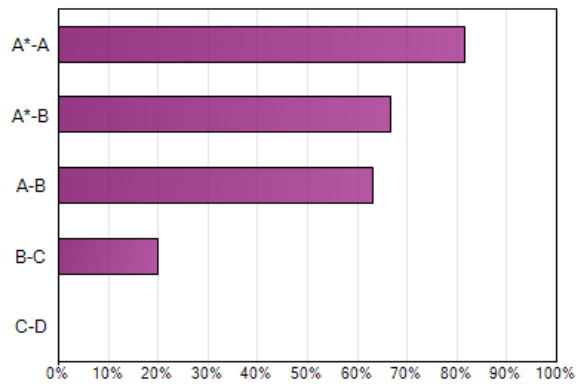
<b>A Level APE</b>	221.2 (C+)
<b>Academic APE</b>	221.2 (C+)
<b>Vocational APE</b>	228.0 (Dis)

---

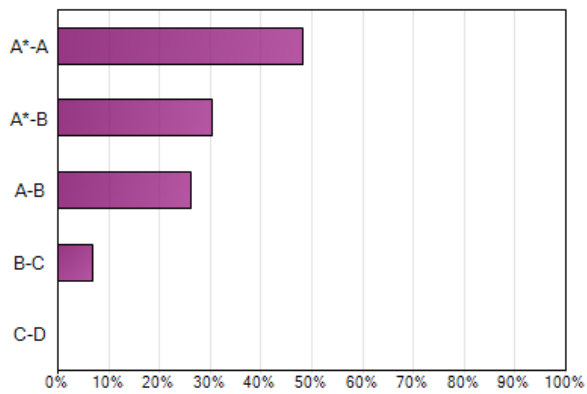
% A Levels A\*-C ?



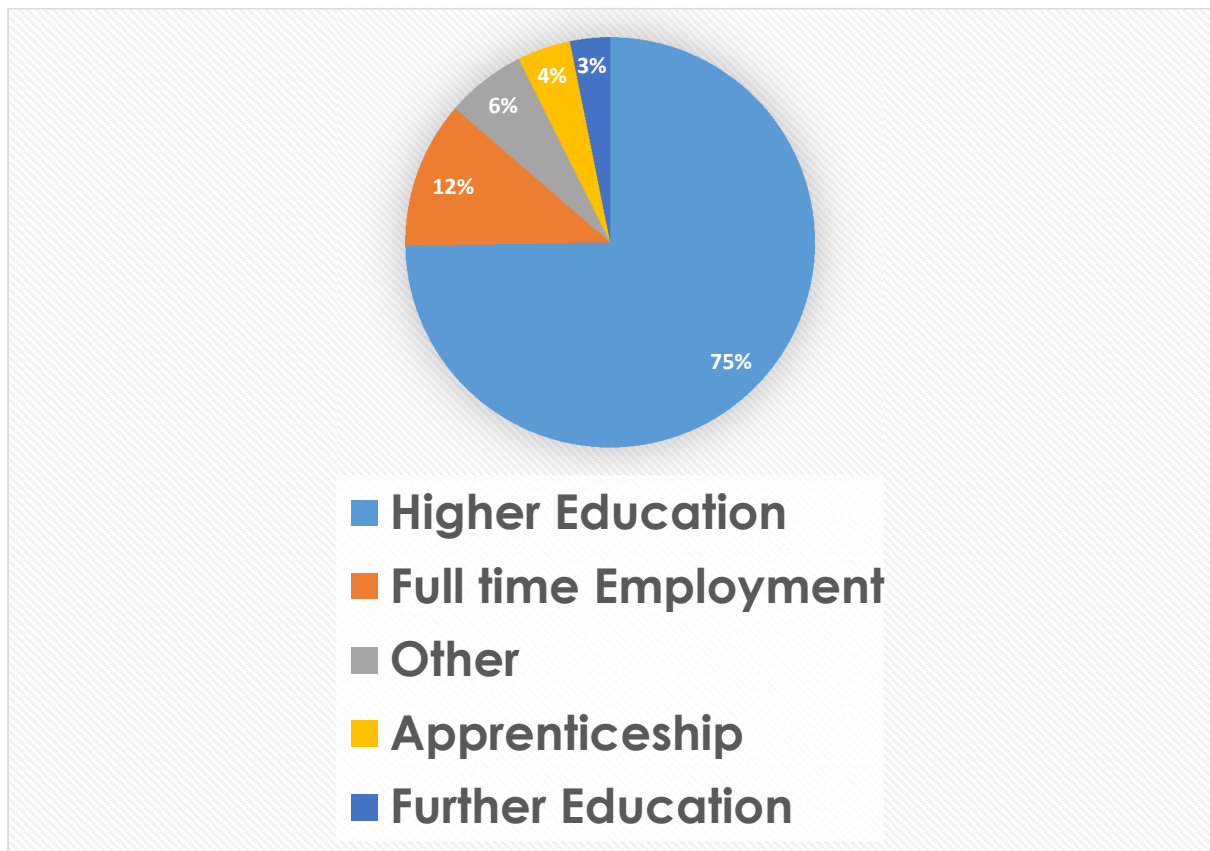
% A Levels A\*-B ?



% A Levels A\*-A ?



## Destinations:



## Progress in English and Maths

This section reports experimental statistics released by the DfE in 2016 on Level 1 and 2 English and maths by students aged 16 to 18 who failed to achieve A\* to C by the end of KS4.

The figures here show the percentage of students who had not achieved a grade A\*-C in English and/or maths at the end of KS4 in 2012/13 and who subsequently achieved a higher level of learning, the same level of learning or a lower level of learning in 2014/15.

Progress in English and Maths for students completing KS5			
Students who did not achieve A*-C in GCSE English at KS4	8	Students who did not achieve A*-C in GCSE Maths at KS4	1
% who subsequently achieved			
A*-C in GCSE English at KS4	100%	A*-C in GCSE Maths at KS4	0

## Retention

This section reports retention figures for Level 3 students in schools only. No colleges are included in the data.

### Previous Year 12 Retention

The percentage of students who completed Level 3 in 2015/16 who were enrolled in Y12 at the start of 2014/15 and were still enrolled at the end of that academic year.

### Year 12 Retention

The percentage of students who were enrolled in Y12 at the start of 2015/16 and were still enrolled at the end of the academic year.

### Transition Retention

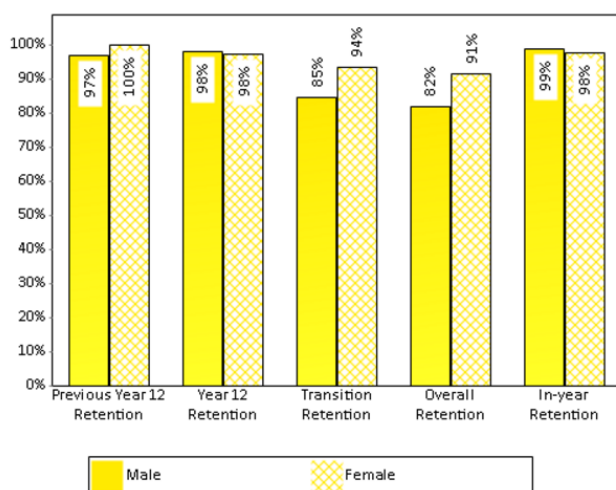
The percentage of students who completed Y12 in 2014/15 and who started Y13 in 2015/16; i.e. the proportion who completed Y12 who continued on to Y13.

### Overall Retention

The percentage of students who started Y12 in 2014/15 and completed Y13 in 2015/16.

### In-year Retention

The percentage of all Y12 and Y13 students enrolled at the start of 2015/16 who were still enrolled at the end of the academic year.



2016	Average retention within Centre		
	Total Students Retained	Male	Female
Previous Year 12 Retention	112	97.0%	100.0%
Year 12 Retention	92	98.1%	97.6%
Transition Retention	99	84.6%	93.6%
Overall Retention	98	82.1%	91.5%
In-year Retention	188	99.1%	97.6%